

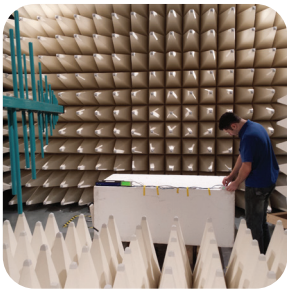
**RAIL TESTING**



**ALL YOUR TESTING AND CERTIFICATION IN ONE LOCATION**

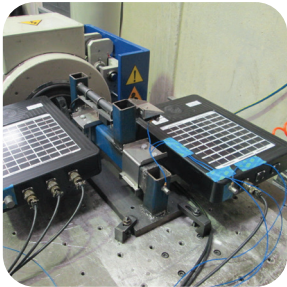
EMC Testing | Environmental Testing | Mechanical Testing | Long-life Testing  
Acoustic Testing | Electrical Testing | Consulting Services

Austest Laboratories offers the most comprehensive and publicly available environmental, EMC and electrical testing facilities in Australia and New Zealand. This includes the most up to date EMC facilities, electrical measurement equipment, IP and IK testing facility and vibration testing to support all your domestic and commercial luminaire testing requirements.



## EMC

- Radio frequency interference emissions and susceptibility
- Surges, ESD and transient burst susceptibility
- In-situ testing
- On site surveys



## Electrical safety

- Electronic Equipment Used on Rolling Stock
- Measurement & control equipment
- Information Technology equipment
- Generic electrical safety



## Climatic Testing

- Temperature
- Humidity
- Thermal shock



## Mechanical Testing

- Vibration (payload up to 2,000 kg)
- Shock (classical and SRS, payload up to 2,000 kg)
- Drop and impact
- Inclination
- Altitude and pressure
- Cyclic fatigue
- Static load
- Enclosure protection (IP & IK)
- Constant acceleration
- Combined testing (vibration/temperature)



## Acoustics

- Airborne noise
- Structurborne noise
- On-site measurements

## Accelerated Ageing

- Salt fog and corrosion
- UV-A and UV-B radiation
- Broadband solar (xenon-arc) spectrum
- Combined UV/rain/temperature/humidity testing

## Design and consulting

- EMC advisory services & product modifications
- Vibration and shock consulting
- Design of cushions and resilient mounts
- Vibration measurement and diagnostics
- Acoustic design and noise mitigation
- Test fixtures design and manufacturing

## Some of the test standards we offer include:

- EN 50155
- EN 50121-3-2
- EN 50121-4
- EN 61373
- IEC/EN/AS 60529
- IEC/EN/AS 62262
- IEC/EN/AS 60068-2
- ASTM D4169-09
- ASTM D4728-01
- ISTA 2A
- ISTA 3A
- EN 50125-3



**SYDNEY (Main Office)**  
Unit 2, 9 Packard Avenue,  
Castle Hill NSW 2154, Aust  
Tel: +61 (0)2 9680 9990  
Fax: +61 (0)2 8850 3113

**MELBOURNE**  
2 Brex Court  
Reservoir, VIC 3073, Aust  
Tel: +61 (0)3 9464 4016  
Fax: +61 (0)3 9464 0687

**ADELAIDE**  
13 Newfield Rd,  
Para Hills West, SA 5096, Aust  
Tel: +61 (0)8 8288 7400  
Fax: +61 (0)8 8288 7411

**BRISBANE**  
Phone: +61 (0)7 3177 3384

**UNITED STATES**  
Tel: +1 323 578 5588  
Fax: +1 323 372 3734

Please consult A2LA Certificate Numbers 2765.02 for a complete listing of accredited services.

[www.austest.com.au](http://www.austest.com.au) | [austest@austest.com.au](mailto:austest@austest.com.au)